



# fecolux

## High sound insulating wall-flush double glazing, optional E30 and EI30

**Dimensions:** Building-specific unit-width and unit-height, wall thickness 105 mm, recommended unit size undivided up to W x H = 1.000 x 3.000 mm

**Structure:** Glass frame made of steel rolled profiles, with perforation, without centre joint, cover frame of aluminium profiles, mitred corners, facing width glass frame all around 30 mm

**Surface:** Base frame powder-coated in RAL 9006 white-aluminium, cover frame aluminium natural E6/EV1 anodized, optionally powder-coated in RAL colours

**Glazing:** Two-pane double glazing consisting of float, tempered, laminated and fire-resistant glass\*  
Double glazing 2 x 5-12 mm float/tempered/laminated glass

**Substructure:** Galvanized rolled-steel sections, standard uprights with installation openings, optional uprights with slotted rail for integrated vertical organisation

**Connecting profiles:** Galvanized U-shaped rolled-steel sections as recessed connecting joints, coated in RAL 7016 anthracite, optional in other RAL colours

**Frame top:** Flush-front aluminium profile 50 mm high in the surface of the glass frame

**Floor connection:** Telescopic, integrated negative base, height approx. 50-100 mm (80 mm standard), with full-glazing three-part base profile and level adjuster

**Ceiling connection:** Telescopic, shadow joint approx. 20 mm, absorption of standard tolerances and structural movements up to +/- 15 mm (without frame top +/- 10 mm), optional higher tolerance

**Sound insulation:** (see also pages 44-47)

Sound insulation – double glazing	$R_{w,P} = 43/45/47/49$ dB
Sound insulation – double glazing E30	$R_{w,P} = 43/45/47/49$ dB
Sound insulation – double glazing EI30	$R_{w,P} = 47/49$ dB

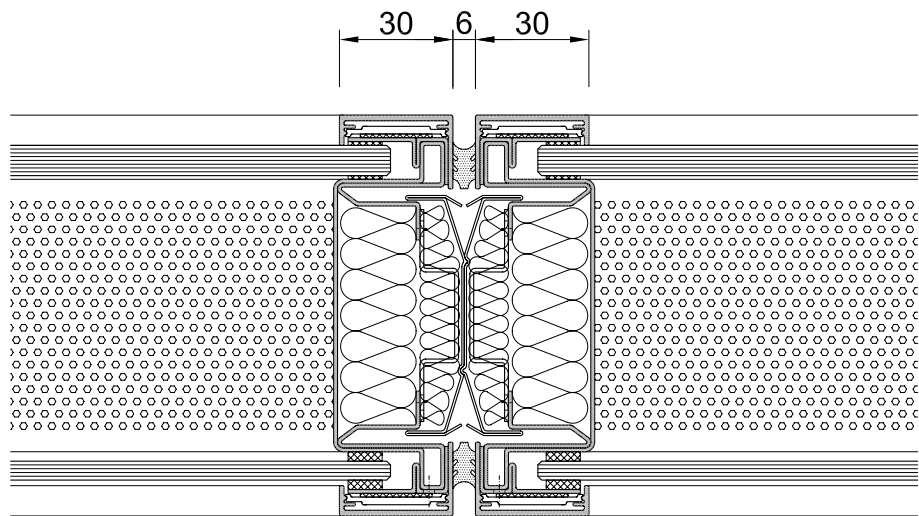
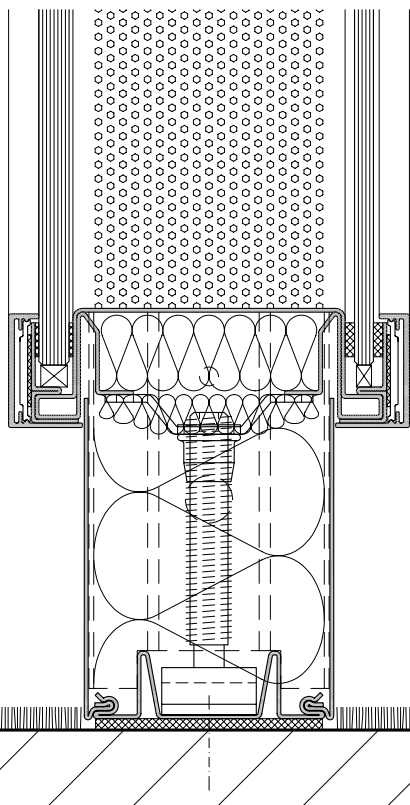
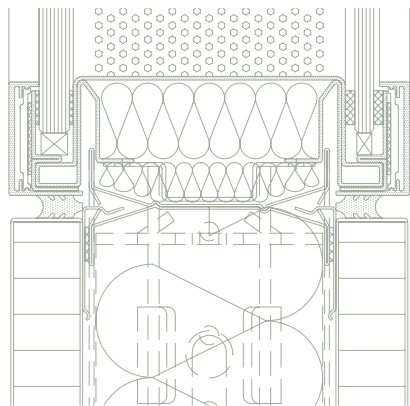
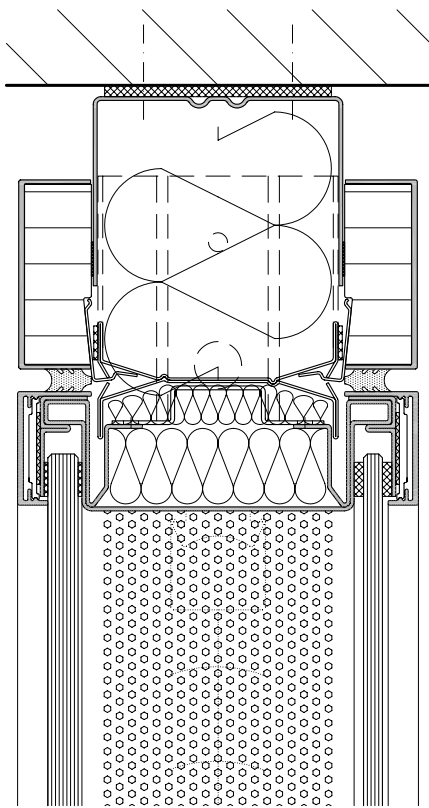
**Static certification:** According to DIN 4103, Part 1, installation area 1 and 2

**Fire resistance:** (see also pages 50-51)

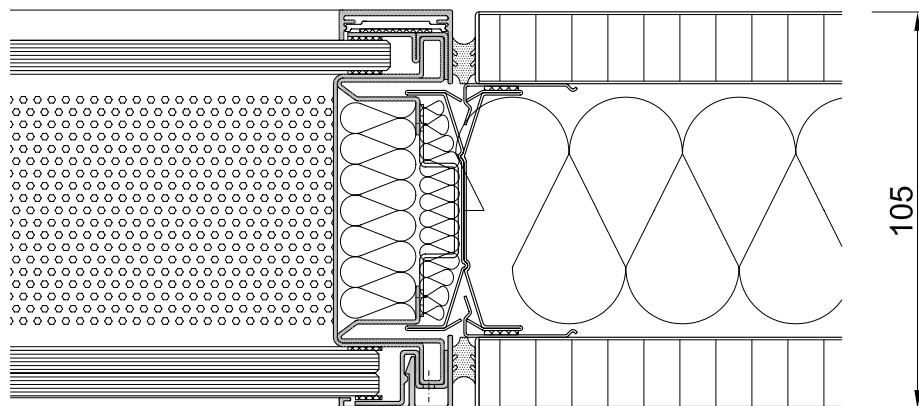
E30 top glazing	undivided up to W x H = 1.500 x 1.135 mm
E30 full glazing	undivided up to W x H = 1.250 x 2.600 mm
EI30 full glazing	undivided up to W x H = 1.000 x 3.000 mm
EI30 full glazing	divided up to W x H = 1.350 x 3.000 mm

**Option - blinds:** 25 mm wide horizontal slats, centreline in the space between the panes, manual operation using a rotary knob with reverse function, or electric with a lifting, lowering and tilting function, optional with group or remote control, with a test certificate for EI30 fire-resistant glazing

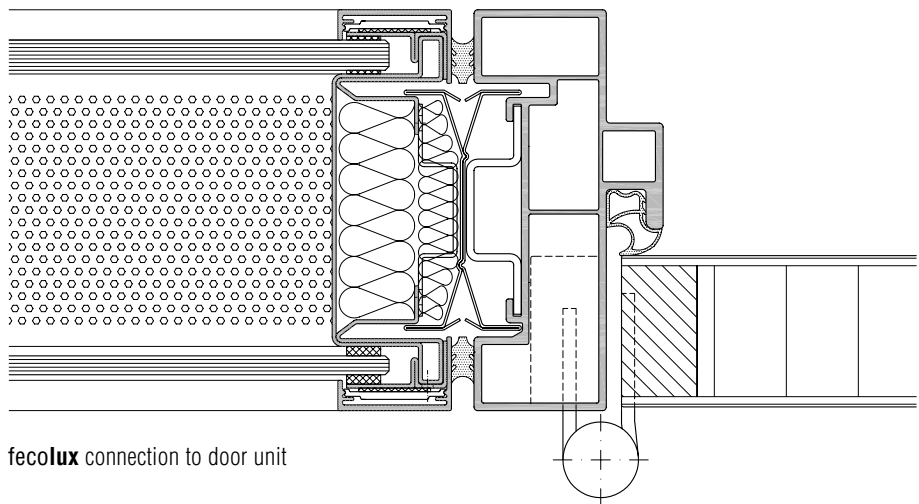
\* Glazing which extends down to the floor must, according to Workplace Regulations and Accident Prevention Regulations, be safety glass (single or laminated safety glass). With full glazing it is also recommended that glass marking be included at eye level. Fire-resistant glass has other design-dependent visual properties.



fecolux horizontal section



fecolux connection to solid wall



fecolux connection to door unit