



fecopur

Wall-centred single or insulation glass as a 50 mm thin post and beam structure, optional E30 and EI30

Dimensions: Building-specific unit-width and unit-height, wall thickness tapered to 80 mm (post) and 72 mm (beam), special thickness 100 mm (post) in combination with solid wall 125 mm, recommended unit size undivided up to W x H = 1.350 x 3.000 mm

Structure: Post and beam construction made of aluminium profiles, posts and beams with a uniform facing width of 50 mm, beams set back by 4 mm compared to posts on both sides, top glazing on fecowand solid wall 105 mm with recessed posts and concealed lower glass frame, fire-resistant glazing with steel glass-retaining rails

Surface: Post and beam profiles aluminium natural E6/EV1 anodized, optionally powder-coated in RAL colours

Glazing: Single or insulation glass consisting of float, tempered, laminated and fire-resistant glass*

| | |
|--------------------------|--|
| Single glass | 8 mm float/tempered/laminated glass |
| Insulation glass | 28 mm insulation glass out of float/temp./lam. glass |
| Fire-resistant glass | 28 mm fire-resistant/clear glass |
| Special insulation glass | 48 mm insulating glass out of float/temp./lam. glass |

Substructure: Galvanized rolled-steel sections, standard uprights with installation openings, optional uprights with slotted rail for integrated vertical organisation

Connecting profiles: Galvanized U-shaped rolled-steel sections as recessed connecting joints, coated in RAL 7016 anthracite, optional in other RAL colours

Floor connection: Telescopic, beam height 50 mm with shadow gap approx. 30 mm

Ceiling connection: Telescopic, beam height 50 mm with shadow joint approx. 20mm, absorption of standard tolerances and structural movements up to +/- 15 mm (fire resistance +/- 5 mm), optional higher tolerance absorption

Sound insulation: (see also pages 44-47)

| | |
|---|-------------------------|
| Sound insulation – single glazing | $R_{w,p} = 32/35/37$ dB |
| Sound insulation – insulation glazing | $R_{w,p} = 37/39/42$ dB |
| Sound insulation – fire-resistant glazing | $R_{w,p} = 37/40/42$ dB |
| Sound insulation – special insulation glazing | $R_{w,p} = 42/45/47$ dB |

Static certification: According to DIN 4103, Part 1, installation area 1 and 2

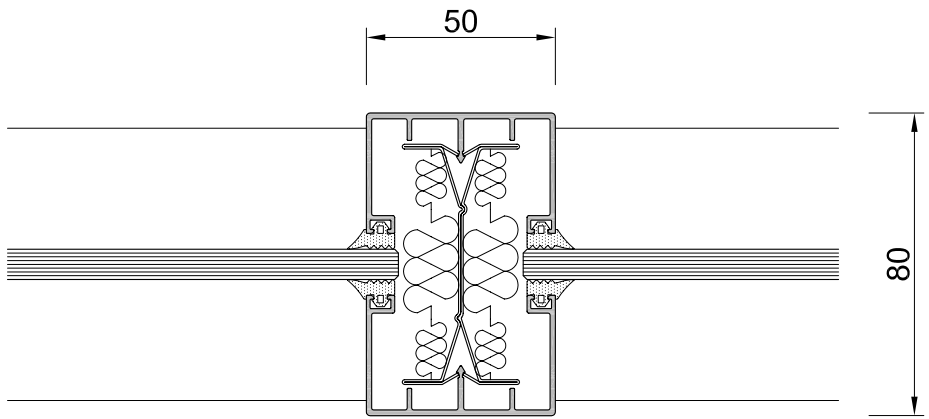
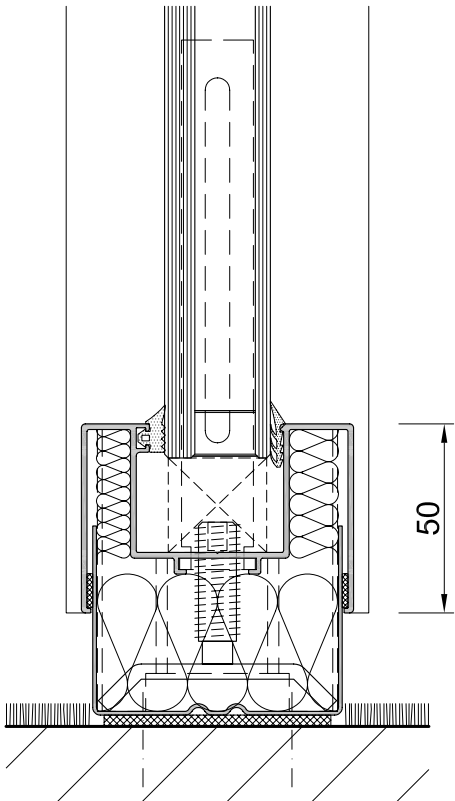
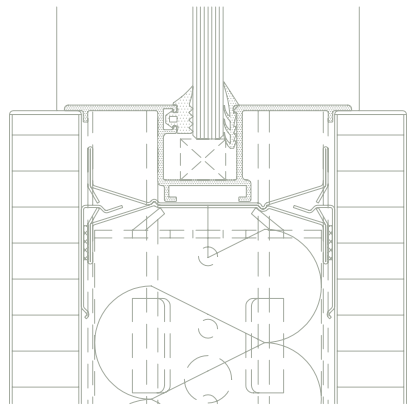
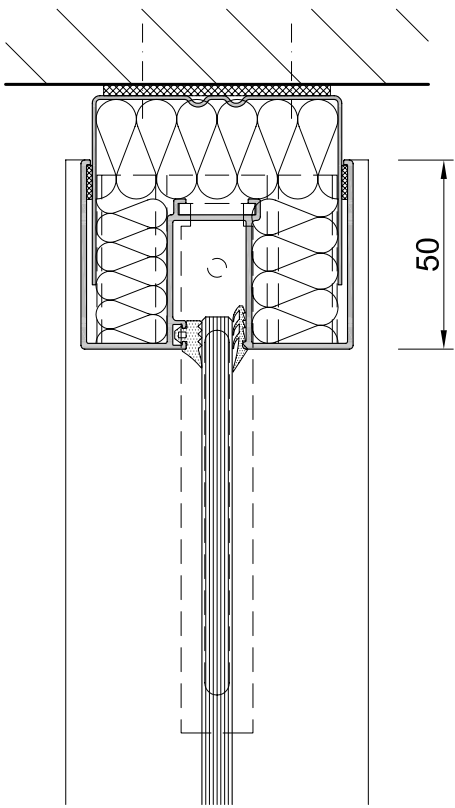
Fire resistance: (see also pages 50-51)

EI0 (no requirements)

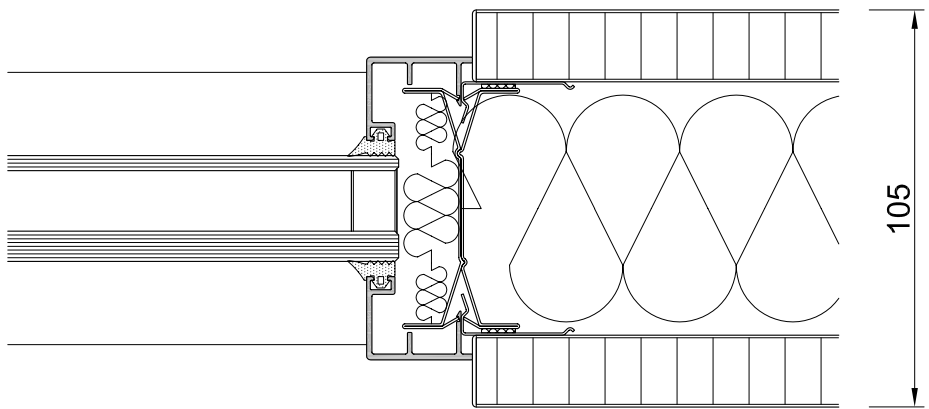
E30 top glazing undivided up to W x H = 2.050 x 1.150 mm

EI30 full glazing undivided up to W x H = 1.350 x 3.000 mm

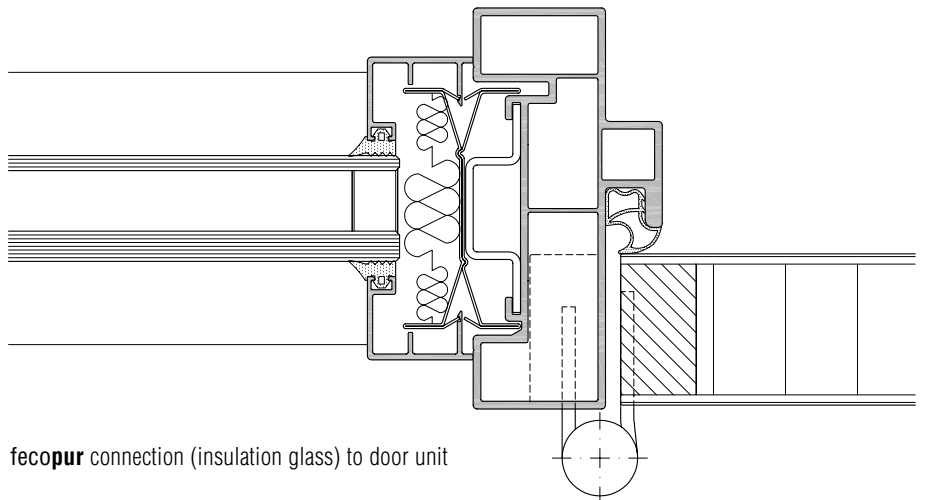
* Glazing which extends down to the floor must, according to Workplace Regulations and Accident Prevention Regulations, be safety glass (single or laminated safety glass). With full glazing it is also recommended that glass marking be included at eye level. Fire-resistant glass has other design-dependent visual properties.



fecopur horizontal section (single glass)



fecopur connection (insulation glass) to solid wall



fecopur connection (insulation glass) to door unit